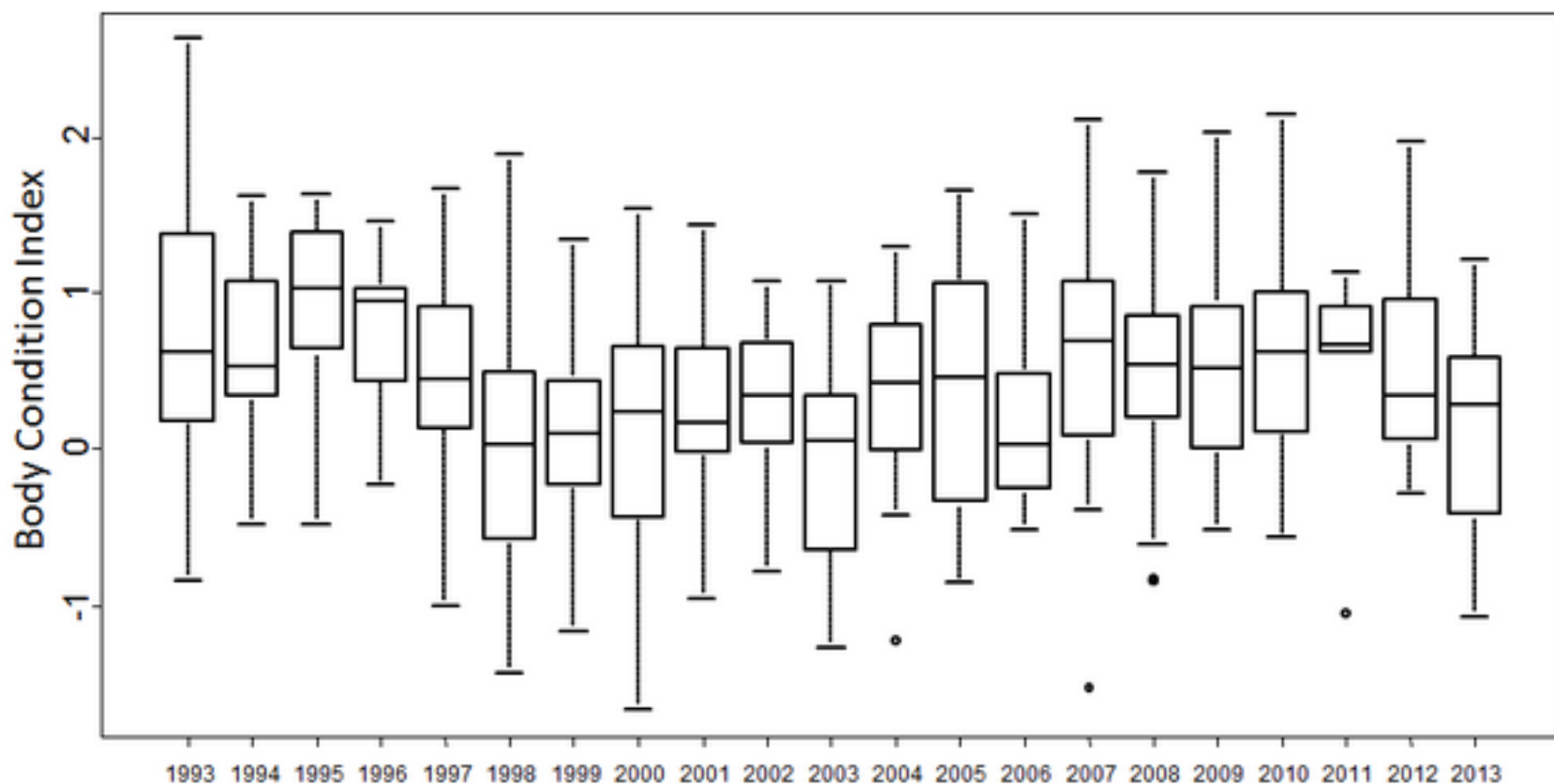


Body condition of adult males



Next update: June, 2014

Body condition index of adult male polar bears caught in spring (Mar-May) in the period 1993-2013.

The lines in the middle of each box show the median value, and the box segments and lines above and below the median each cover ca 25% of the data points. Outliers are represented by small circles. There is no significant trend over time. However, a major part of the interannual variation can be explained by variation in the Arctic Oscillation (AO). High values of AO (milder weather) at the time of capture correlate with a lower body condition index (leaner animals).

- Contact person: Jon Aars (NPI), email: aars@npolar.no, phone: 77750524
- Contact person: Magnus Andersen (NPI), email: magnus.andersen@npolar.no, phone: 77750534